

MONTHLY MEMBERSHIP PROGRESS REPORT

District 33 K

Results as of: 12/31/2023

GMT:

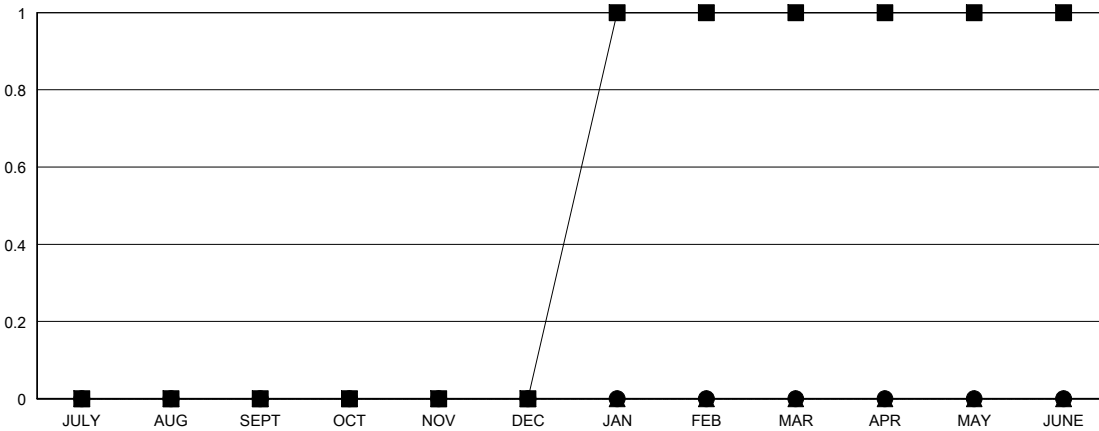
LOCATION MASSACHUSETTS

GMT CA

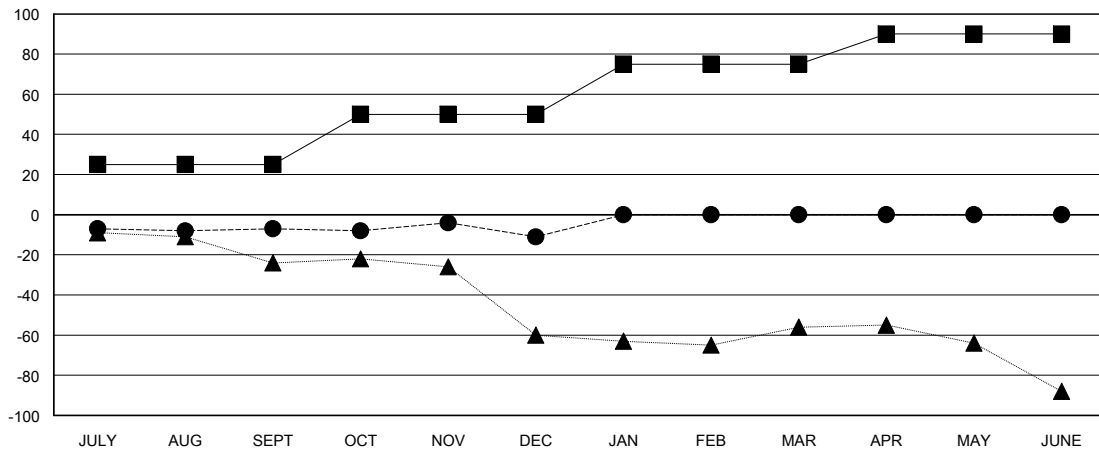
Clubs			
RESULTS FOR 2023-2024			
QUARTER	NEW CLUB GOAL	NEW CLUBS	DROPPED CLUBS
JULY/AUG/SEPT	0	0	0
OCT/NOV/DEC	0	0	0
JAN/FEB/MAR	1	0	0
APR/MAY/JUNE	0	0	0

Members			
RESULTS FOR 2023-2024			
QUARTER	MEMBER GROWTH NET GOAL	MEMBER GROWTH ACTUAL	DROPPED MEMBERS ACTUAL (including transfers)
JULY/AUG/SEPT	25	18	24
OCT/NOV/DEC	25	44	44
JAN/FEB/MAR	25	0	0
APR/MAY/JUNE	15	0	0

GOALS AND ACTUAL NEW CLUBS CUMULATIVE



GOALS AND ACTUAL MEMBERS CUMULATIVE



DROPPED CLUBS: 0	20 CLUBS OF 47 ADDED 1 OR MORE NEW MEMBERS	GENDER DISTRIBUTION MALE 950 (63.00%) FEMALE 557 (36.94%)
DROPPED MEMBERS DECEASED 10 CLUB CANCELLED 0 OTHER 58 TOTAL 68	CLICK HERE FOR CUMULATIVE MEMBERSHIP DATA	TOTAL FAMILY UNIT MEMBERS 180 FAMILY MEMBERS PAYING HALF DUES 90